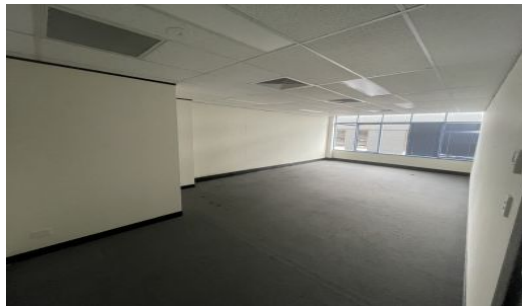


Camelle.



Hornsby

FULLY RENOVATED Medical Suite in the CBD + 2 parking included

Spacious, Modern Office Space in Medical Centre, minutes from Hornsby Train Station.

** Offering new paint and carpet and flexibility of fit out.

- Superb position, directly across from Westfield entry.
- Lift access,
- Shared amenities.
- Located above Chemist and Medical centre
- Suit doctors, dentists, chiropractors, accountants, solicitors or other professionals
- Very well presented with lots of natural light and some fit out including internal kitchenette and water.

- 2 Parking spaces included **

B3 - Commercial Core

Type : Healthcare

Building Size: 118 sqm

View : <https://www.camelle.com.au/lease/nsw/north-shore-upper/hornsby/commercial/healthcare/7357137>

Janine Best
02 9476 5222

Murray Byrnes
02 9476 5222