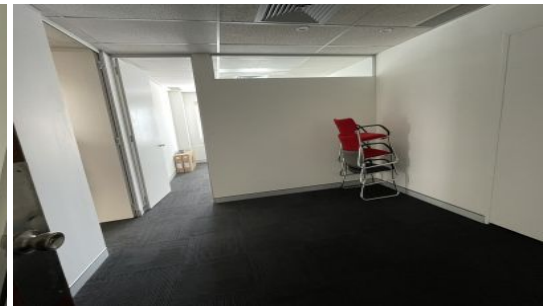
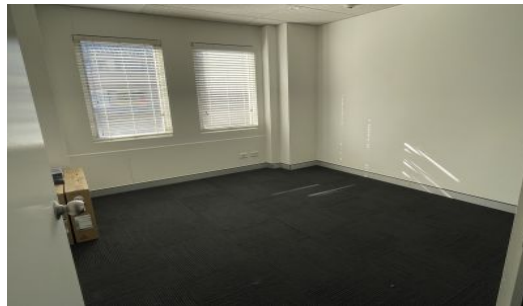


Camelle.

LEASED BY

Camelle.



4A/32-34 Florence Street Hornsby NSW

Excellent Small Office In Medical Building!

Great opportunity to lease a small office space in a highly sought-after building with great accessibility.

- Plenty of Natural Light
- Freshly Painted & New Carpet
- Split into 2 Rooms (option of 3rd room)
- 1 Car Space Allocated - Plenty of Public Parking Nearby
- Elevator Access
- Aircondition Space
- Shared Amenities
- Less than 100m from Hornsby Westfield
- Less than 400m from Hornsby Station

Size:
23sqm (approx)

Zoning:
E2 - Commercial Core

Type : Healthcare
Building Size: 23 sqm
Car Spaces : 1
View : <https://www.camelle.com.au/lease/nsw/north-shore-upper/hornsby/commercial/healthcare/7591820>

Janine Best
02 9476 5222