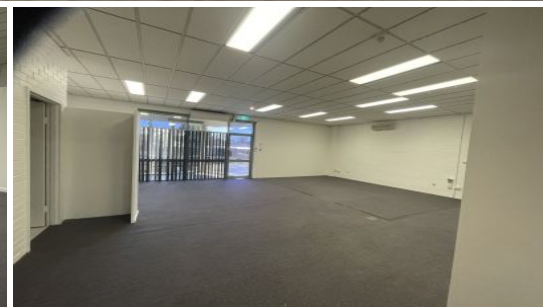


Camelle.



2/152 George Street Hornsby NSW

Severely reduced large Office in Outstanding Hornsby CBD Location!

This is an excellent opportunity to move your businesses to a prominent position located directly across from the train station and on Hornsby's main thoroughfare; George St.

This property would be great for office/consulting, medical, showroom, exercise studio, tutoring plus so many other businesses!

- Exceptional Exposure - Awesome Signage Opportunity
- Central Hornsby Location
- Large Reception Area
- Office/Showroom Area
- Storage Room
- First Level Office Space
- Dual Access - Entry and front at back via a staircase.
- Good Natural Light
- Large Kitchenette
- Men's and Ladies' Amenities

Type : Offices
Building Size: 220 sqm
View : <https://www.camelle.com.au/lease/nsw/north-shore-upper/hornsby/commercial/offices/7694222>

Janine Best
02 9476 5222