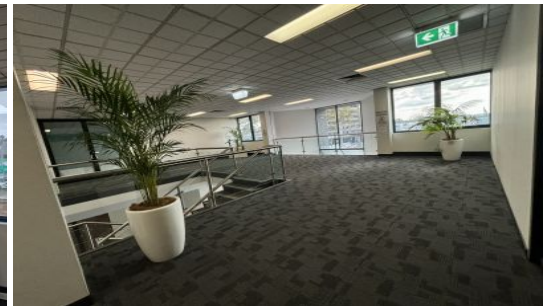
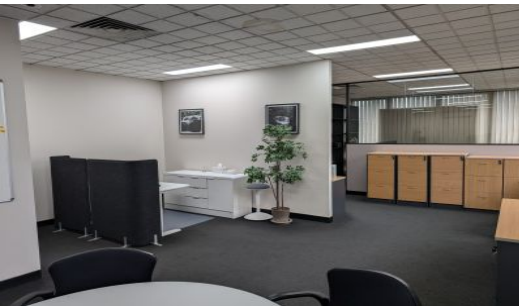


# Camelle.



5&6/265-271 Pennant Hills Road Thornleigh NSW

**Office space with large amount of natural light and exceptional outlook.**

Key features include

- Reception
- Boardroom
- Kitchen
- Air Conditioning
- 4 parking spaces undercover
- Double suite
- Open plan work area
- Located on level 1
- Semi-furnished
- 400G Fibre Optic + NBN
- Can be leased together or seperately

The above information has been furnished to us by the Owner. We have not verified whether or not that information is accurate and do not have any belief one way or the other in its accuracy. We do not accept any

**Contact Agent**

**Type** : Offices  
**Building Size** : 133 sqm  
**Car Spaces** : 4  
**View** : <https://www.camelle.com.au/lease/nsw/northern-suburbs/thornleigh/commercial/offices/8128501>

---

**Janine Best**  
02 9476 5222